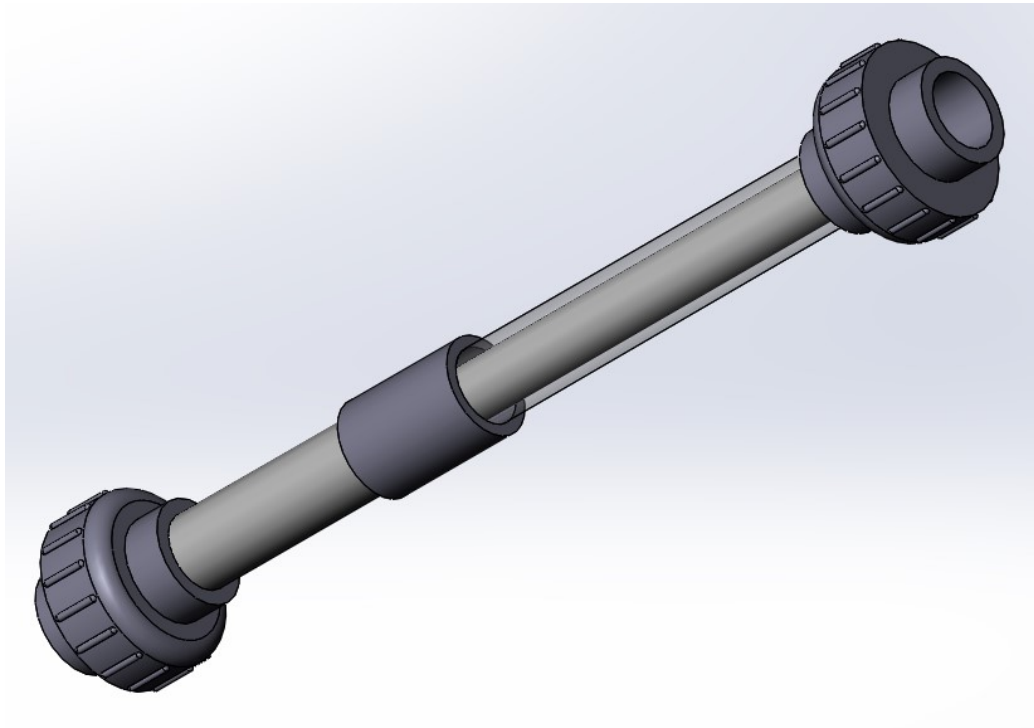




# H2O Rx

## 2850 Series Static Mixer

H2O Rx has a license to manufacture Westfall Manufacturing's 2800 and 2850 Series static mixers.



### Features

- ◆ uPVC Construction for excellent chemical compatibility
- ◆ Solvent Weld Joint Union ends for ease of installation
- ◆ Clear PVC for visual confirmation
- ◆ Mixing completed at discharge
- ◆ Wide range of flows
- ◆ Wide range of performance and headloss selections
- ◆ Union O-Rings as Viton (standard). Other materials on request
- ◆ Made in Australia
- ◆ Custom configurations available

H2O Rx

PO Box 748

Lane Cove NSW 1595

Phone: 0409 784 236

Web: [www.h2orx.com.au](http://www.h2orx.com.au)

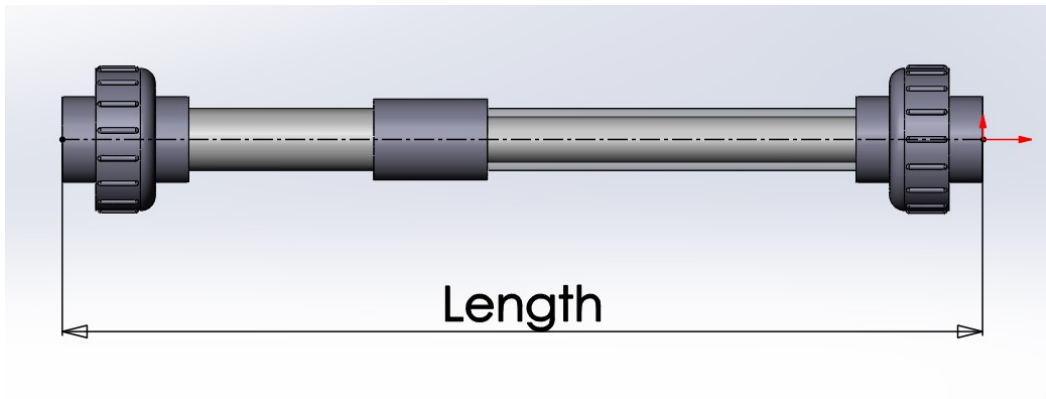
Email: [info@h2orx.com.au](mailto:info@h2orx.com.au)



2850 Series Static Mixer

# 2850 Series Static Mixer

Size (DN)	Length (mm)	Beta	Recommended Flow Range (L/s)	Headloss Coefficient (kV)	Headloss (Water) @ Max flow (kPa)	Mixing Efficacy (CoV)	Part Number
20	428	0.7	0.12 — 0.36	32.59	14	0.008	2850SM-20-0.7
		0.8	0.36 — 0.95	13.63	40	0.009	2850SM-20-0.8
		0.9	0.95 — 1.3	6.78	37	0.05	2850SM-20-0.9
25	492	0.7	0.2 — 0.6	32.59	15	0.008	2850SM-25-0.7
		0.8	0.6 — 1.4	13.63	35	0.009	2850SM-25-0.8
		0.9	1.4 — 2.0	6.78	35	0.05	2850SM-25-0.9
50	762	0.7	0.6 — 1.8	32.59	14	0.008	2850SM-50-0.7
		0.8	1.8 — 4.7	13.63	38	0.009	2850SM-50-0.8
		0.9	4.7 — 6.6	6.78	37	0.05	2850SM-50-0.9



## FAQ's

### How good is the mixing?

The Co-efficient of Variation (CoV) is the measure of how "homogenous" the fluid is at the mixer discharge. The smaller the CoV, the more homogenous the fluid is.

### What is the headloss?

For simple checks we provide the headloss of each configuration at the maximum recommended flow rate.

### What is the headloss at the flows I have?

We provide the headloss co-efficient (kV) for each mixer. This allows you to enter the kV in your system calculations and check the system as a whole and over a range of flows.